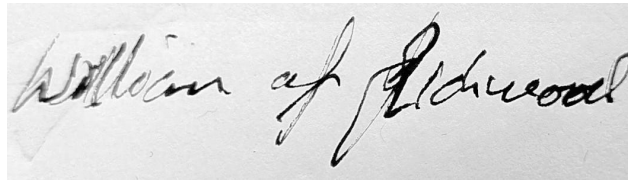




December, 2022
Based upon SCA Marshal's Handbook, June 2022

Approved on the 1st day of December, 2022.

A handwritten signature in black ink on a light-colored background. The signature reads "William of Drachenwald" in a cursive, medieval-style script.

Kingdom Earl Marshal of Drachenwald

Two handwritten signatures in black ink on a light-colored background. On the left, the signature reads "Avery King" with a decorative flourish below the word "King". On the right, the signature reads "Cornelia Queen" with a decorative flourish to the right of the word "Queen".

King of Drachenwald

Queen of Drachenwald

Copyright © 1985, 1989, 1992, 1994, 2000, 2002, 2006, 2007, 2008, 2012, 2013, 2015, 2018, 2020, 2021 by The Society for Creative Anachronism, Inc. [and the Kingdom of Drachenwald](#). All Rights Reserved.

This handbook is an official corporate publication of the Society for Creative Anachronism, Inc., a nonprofit organization dedicated to researching and recreating the customs, combat and courtesy of the Middle Ages and the Renaissance.

Copies of [the SCA version of](#) this document can be ordered from SCA Marketplace, PO Box 611928, San Jose, CA 95161.

Members of the Society for Creative Anachronism, Inc., may photocopy this work in whole or in part for SCA use provided that copyright credit is given and no changes are made to the text.

The contents of this document will be posted at <http://www.drachenwald.sca.org> and further reproduction on other Internet sites is expressly forbidden.

A. General	6
B. Minor Authorization	7
A. The Rules of the Lists	8
B. Applications of the Rules of the Lists	9
A. General Information	10
B. Behavior on the Field	10
C. Target Areas	11
D. Combat Archery Conventions	12
A. Armored Participants	15
B. Helms	16
C. Eye Wear	17
D. Neck Armor	17
E. Body, Shoulder, and Groin Armor	17
F. Hand and Wrist Armor:	17
G. Arm Armor	18
I. Leg Armor	18
J. Shields	18
A. General	19
B. Single-Handed Weapons	20
C. Two-Handed Weapons	20
D. Fiberglass Spears	21
E. Throwing Weapons	22

F. Combat Archery Bows/Crossbows	23
G. Combat Archery Ammunition	23
A. General	28
B. Munitions	28
C. Blow Acknowledgment	28
D. Destroying Siege Engines.	28
A. General Requirements	29
A. Before the War	30
B. Marshal of a War	30
A. Preparing to Marshal Combat Activities	32
B. Marshaling Single Combat	33
C. Marshaling Melees	34
A. General Information	36
B. Sample Armor Inspection	37
C. Sample Weapon Inspection	38
D. Sample Combat Archery Inspection	39
A. Experimental Weapons and Materials	40
A. Reporting Requirements	40
A. Grievances and Disputes	42
B. Sanctions	42

A. Armor Materials	44
B. Weapons	45
C. Other Definitions	46

This handbook is the latest revision of a set of rules and guidelines that have been ever changing over the last half century. While the traditions and laws of each kingdom vary, these rules represent the minimum requirements for equipment and conduct required for participation in SCA armored combat. *In Drachenwald, kingdom-of-residence-specific rules and interpretations also apply. These are always marked by differently coloured, italic text such as this.*

Previously, the rules for Armored Steel fighting within the SCA (*were*) included in this handbook. These have been moved to their own, stand-alone handbook.

Remember, it is your duty as a marshal to know and understand the rules set forth in this handbook. Be diligent in your awareness of the current standards, as well as ongoing changes and updates at both a Society and Kingdom level.

A. General

1. All persons who wish to participate in SCA combat activities must authorize under the Society and Kingdom-of-residence authorization procedures. SCA combat activities are defined as armored combat, Society period fencing, combat archery siege, and marshaling. Other martial activities clearly falling within the scope above are also considered combat-related activities. Youth combat programs are not supervised at the Society level, but participation in such programs requires authorization following Kingdom-of-residence procedures.
2. Each Kingdom shall establish a procedure to authorize combatants for participation in SCA combat-related activities. These procedures shall verify that the candidate is familiar with the following:
 - a. Rules of the Lists of the SCA.
 - b. The Armor and Weapons standards of the SCA.
 - c. The Conventions of Combat for the SCA.
 - d. Kingdom-of-residence–specific Conventions of Combat.
 - e. Kingdom-of-residence–specific Armor and Weapons Standards.
3. In addition to the above requirements, candidates must demonstrate the ability to function on the field in a manner that is safe both to themselves and to their opponents.
4. Only a warranted or rostered authorized marshal may perform an authorization. This authorizing marshal must witness the authorization and execute the appropriate paperwork to ensure that the authorization is registered with the appropriate kingdom official.
5. Authorization shall be registered with, and kept on file by, the Minister of the Lists or another designated official of each kingdom. This office shall be responsible for keeping properly completed waivers and maintaining the registration of authorizations. This office shall provide the Earl Marshal with a list of all current combat authorization cards upon request.

6. No authorization card may be issued until a properly completed Waiver is filed with the Kingdom.
7. Signed waivers for SCA combat-related activities shall be kept on file for a period of seven (7) years.
8. Combat authorizations may be issued for a period of time equal to the time that the combat participant has an active waiver on file.
9. Kingdoms may issue authorizations only to persons who reside within their established boundaries. An exception to this is allowed where a person has been formally recognized as a subject of a kingdom in which they do not reside. Formal recognition shall be recorded in accordance with the requirements of the SCA Governing Documents and kingdom law and custom.
10. Kingdoms may define additional types of authorization, such as weapon forms, field marshals, and missile combat marshals, and requirements for them, as may be deemed necessary.
11. Valid combat authorization cards shall be accepted outside the issuing kingdom as proof of authorization, as long as proof of a signed and active waiver is available. Kingdoms may define additional requirements before renewing an authorization card for a person who has moved into that kingdom from another kingdom. *In Drachenwald, the authorization card of an authorized fighter from another kingdom is valid for a time period up to 90 days, after which the fighter must authorize formally in Drachenwald.*
12. A marshal from any kingdom may revoke the authorization card of a fighter from any other kingdom for just and stated cause. The marshal in charge (MIC) of the event should be notified immediately and the Earl Marshal of the fighter's kingdom of residence should receive a detailed report of the incident.

B. Minor Authorization

Minors (ages 14–17) may authorize with these additional requirements:

1. In order to be authorized as a combatant or marshal in adult armored combat, an individual must have attained his or her sixteenth (16th) birthday. In order to be authorized as a participant, combatant, or marshal in any other form of Society combat-related activity, except youth combat, an individual must have attained his or her fourteenth (14th) birthday.
2. No person below the age of eighteen (18) may be warranted as a group Marshal, or the Marshal in Charge of an event.
3. The parents or guardians of the minor must witness SCA combat, discuss with a witnessing marshal how it relates to the participation of their child, and execute a "Minor's Waiver and Informed Consent to Participate in SCA Combat-Related Activities." The witnessing Marshal must countersign the waiver.
4. Only the Earl Marshal, the Principality Marshal, or a designated deputy may authorize the minor for SCA Combat-Related Activities.
5. At any event in which the minor is involved in SCA combat-related activities, the minor must either have a parent or guardian present or must be in possession of a properly executed "Medical Authorization Form for Minors." Said Medical Authorization Form must designate an adult present at the event as able to

authorize medical treatment in the case of an emergency.

6. Minors engaging in combat with adults shall be marked in the following manner: A single yellow diamond no larger than *(1 inch)* (25.4 mm) but no smaller than 0.5 inch (12.7 mm) to be placed on the front hemisphere of the helm (preferably on or near the inspection sticker). Minors competing with adults in Rapier will have the same diamond on the cuff of the glove of their dominant weapon hand.

A. The Rules of the Lists

The basic rules for SCA combat are contained in the Rules of the Lists. These rules cover all combat within the SCA including but not limited to tournaments, non-tourney martial field activities such as wars, combat archery, and Society period fencing. The observance of honor and chivalry and the safety of the combatants are the overriding goals of these rules. The following is intended to bring together the appropriate rules for conducting SCA combat activities.

The Rules of the Lists are reprinted here from section IX.B. of the Corpora of the SCA:

1. Each fighter, recognizing the possibilities of physical injury to themselves in such combat, shall assume unto themselves all risk and liability for harm suffered by means of such combat. No fighter shall engage in combat unless and until they have inspected the field of combat and satisfied themselves that it is suitable for combat. Other participants shall likewise recognize the risks involved in their presence on or near the field of combat and shall assume unto themselves the liabilities thereof.
2. No person shall participate in Official Combat-Related Activities (including armored combat, period fencing, and combat archery) outside of formal training sessions unless they have been properly authorized under Society and Kingdom procedures.
3. All combatants must be presented to, and be acceptable to, the Sovereign or his or her representative.
4. All combatants shall adhere to the appropriate armor and weapons standards of the Society, and to any additional standards of the Kingdom in which the event takes place. The Sovereign may waive the additional Kingdom standards.
5. The Sovereign or the Marshallate may bar any weapon or armor from use upon the field of combat. Should a warranted Marshal bar any weapon or armor, an appeal may be made to the Sovereign to allow the weapon or armor.
6. Combatants shall behave in a knightly and chivalrous manner and shall fight according to the appropriate Society and Kingdom Conventions of Combat.
7. No one may be required to participate in Combat-Related Activities. Any combatant may, without dishonor or penalty, reject any challenge without specifying a reason. A fight in a tournament list is not to be considered a challenge and therefore may be declined and forfeit the bout.
8. Fighting with real weapons, whether fast or slow, is strictly forbidden at any Society event. This rule does not consider approved weaponry which meets the Society and Kingdom standards for traditional Society combat and/or Society period rapier combat, used in the context of mutual sport, to be real weaponry.

9. No projectile weapons shall be allowed within the Lists of a tournament, nor shall any weapons be thrown. The use of approved projectile weapons for melee, war, or combat archery shall conform to the appropriate Society and Kingdom Conventions of Combat.

B. Applications of the Rules of the Lists

1. Application of Rule 1: "Other participants" include marshals and support personnel whose activities bring them close to fighting in a situation where boundaries are not clearly defined. Heralds, list pages, and similar officers who leave the field entirely before combat begins are exempt from this requirement, as are water-bearers and churgeons who remain in fixed support points outside the tournament field or battle area. Water-bearers and churgeons who take part in mobile support groups within the overall boundaries of a battle area must receive a basic orientation in field safety.
2. Application of Rule 2: The Crown and/or marshallate of each kingdom shall establish standards and procedures for the authorization of fighters to participate in combat. These procedures shall adhere to the combat authorization procedures in this handbook. At kingdom option, these procedures may involve either a general authorization to participate in armored combat or a set of separate authorization procedures for the use of (or for combat AGAINST) specific weapons or classes of weapons. The Crown and/or marshallate of each kingdom shall establish standards and procedures for the authorization of combat archers and missile users to participate in combat. Kingdoms may establish such additional limitations on the participation of minors as may be deemed necessary. It is usual for authorizations from other kingdoms to be accepted, although exceptions may prove necessary in the case of specific individuals. The Crown may not simply grant an authorization, unless the recipient has successfully completed the authorization process as delineated in Society and kingdom law.
3. Application of Rule 4: Kingdoms may apply armor and weapons standards that are stricter than the Society standards, should they be deemed necessary, but may not reduce or waive any Society standard.
4. Application of Rule 5: If a fighter regards an opponent's weapon or armor as unduly dangerous to self or opponent, he or she can request that the marshal on the field re-inspect the item. Either fighter has the option of appealing the decision of the re-inspection marshal to the marshal in charge and ultimately to the sovereign.
5. Application of Rule 6: Engaging in any Society combat activity with the deliberate intent to inflict bodily harm to an opponent is strictly forbidden.
6. Application of Rule 7: No one is required to engage in SCA combat should he or she prefer not to do so.
7. Application of Rule 8: Since fighting with real weapons is forbidden at any Society event, threatening the use of such weapons is likewise expressly forbidden. At the discretion of the sovereign and the MIC, recognized experts may be permitted to present choreographed demonstrations with real weapons under strictly controlled conditions. No one may wear any real weapon onto the field while participating in combat or present during combat. At the discretion of the sovereign and the MIC, an exception may be made for marshals or other noncombatants to wear knives bonded with peace straps. Posing for still photographs with real weapons is permitted.

8. Application of Rule 9: The prohibition on thrown weapons refers to weapons thrown in combat or thrown in a hostile manner. It does not apply to “tossing,” defined as a gentle, short-range method of transferring or removing a tournament weapon or item from the list field or area of combat. The use of bows and arrows, firearms, slings, javelins, throwing axes, throwing knives, or any other projectile weapon is forbidden within tournament lists, or in any other situation where spectators cannot be separated from the potential line of fire by more than the effective range of the weapon.

A. General Information

1. All traditional SCA armored combat at SCA tourneys, wars, and other events shall be conducted in accordance with the Rules of the Lists of the SCA, Inc., these Conventions of Combat, and such weapon and equipment standards and event rules as are established by the marshallate of the SCA, Inc., and individual kingdom marshallate. *In Drachenwald, although the contents of this section are referred to as “Conventions”, they are interpreted as mandatory rules to be followed.*
2. All kingdoms shall have as their minimum armor and weapons standards those criteria established by the Society minimum armor and weapons standards. Each kingdom may require additional, more extensive, and/or stricter standards.
 - a. All fighters, prior to combat at each and every SCA-sponsored event or fighting practice, shall ensure that their armor and weapons are inspected by a warranted member of the kingdom marshallate.
 - b. Even though a warranted member of the kingdom marshallate has inspected the armor and weapons used by a fighter, each fighter shall accept full responsibility for the condition of his or her own equipment. Each fighter has the obligation to his- or herself, the marshals, and all opponents, to see that his or her equipment meets all Society and kingdom requirements.
 - c. Combat archery ammunition each must be inspected individually before every use.
 - i. Tubular-shafted ammunition may be inspected by the archer and *(used)* again immediately.
 - ii. Fiberglass-shafted ammunition must be taken off the field and re-inspected under the supervision of a combat archery marshal before being used again.
3. When not otherwise directed by the sovereign, the sovereign’s representative upon the field and in all matters dealing with Society combat is the Earl Marshal, and, by delegation, warranted members of the kingdom marshallate.

B. Behavior on the Field

1. Striking an opponent with excessive force is forbidden.
2. All fighters shall obey the commands of the marshals on the field or shall be removed from the field and subject to disciplinary action. Disagreements with the marshals on the field shall be resolved through the established mechanisms outlined in the Procedures for Grievances and Sanctions of the Marshallate Procedures of

the SCA, Inc.

3. Each fighter shall maintain control over his or her temper at all times.
4. Upon hearing the call of "HOLD" all fighting shall IMMEDIATELY stop.
5. A fighter shall not enter the lists or participate in any form of SCA combat activity while impaired by alcohol or drugs (including, but not limited to: drugs prescribed by a licensed (*healthcare*) provider, over-the-counter medications, and illegal controlled substances.)
6. Any behavior that takes deliberate advantage of an opponent's chivalry or safety-consciousness, or that takes deliberate unfair advantage of an opponent, is prohibited.
7. A fighter shall not deliberately strike a helpless opponent. *In Drachenwald, an opponent is interpreted as helpless if they do not have a valid weapon on their person, if they have fallen or are falling over, if they have left the area where combat is permitted, their armor stops meeting the armor requirement rules, or they are otherwise unable to fight.*
8. Any fighter who obtains an unfair advantage by repeatedly becoming "helpless" (for example, by falling down or losing their weapon) may, after being duly warned by the marshals on the field, be forced to yield the fight at the next occurrence of such behavior. The onus of this is on the marshals, not on the opponent. However, the opponent may ask the marshals to let the fight continue. *In Drachenwald, the interpretation of this convention is that Marshals are obliged to take action as described.*
9. Grappling, tripping, throwing, punching, kicking, and wrestling are prohibited. Contact between combatants' bodies, shields, and weapons is expected in corps-a-corps or mêlée situations, as such controlled contact is allowed during these engagements.
10. Deliberately striking an opponent's head, limbs, or body with a shield, weapon haft, or any part of the body is forbidden.
11. Grasping an opponent's person, shield, weapon's striking surface, or bow/crossbow is prohibited.
12. Intentionally striking an opponent outside the legal target areas is forbidden.
13. Intentionally striking a Combat Archer's bow/crossbow is prohibited
14. Intentionally blocking a strike or projectile with a bow/crossbow is prohibited

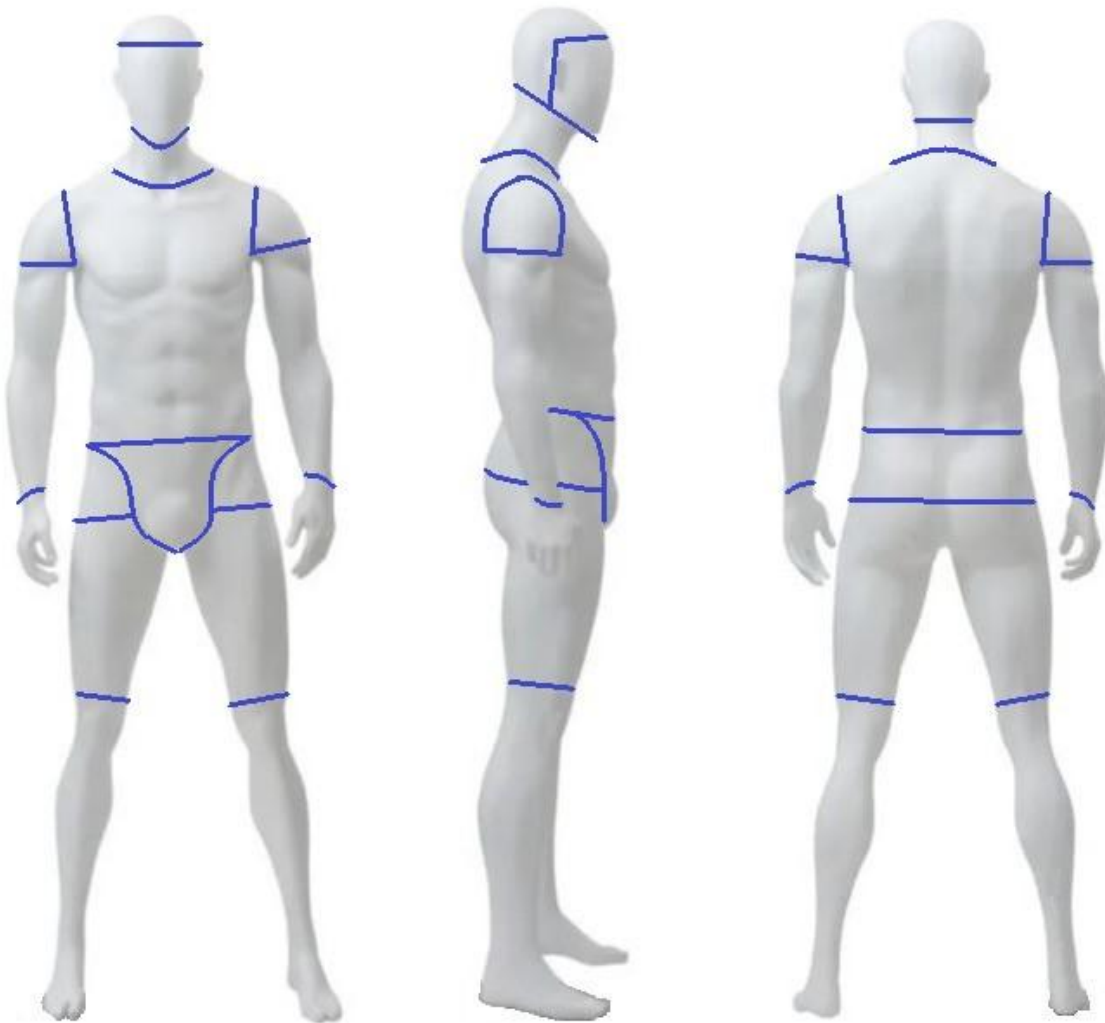
C. Target Areas

1. Torso: All of the body above the points of the hips, excluding the head and arms and including the groin, shoulder blades, and the area between the neck and shoulders.
2. Face: the area between the chin and the middle of the forehead and between the ear openings.
3. Head: The whole head and neck except the face as defined above.
4. Thighs: The leg from one inch [25.4mm] above the top of the knee to a line even with the bottom of the hip socket. *In Drachenwald, the top of the knee is interpreted*

as the top of the kneecap. The bottom of the hip socket is interpreted as the bottom of the femoral head.

5. Hips: Area between the bottom of the hip socket to the point of the hip (iliac crest).
6. Shoulder: From the point of the shoulder down to a line even with the top of the underarm.
7. Arms: From the shoulder to one inch [25.4mm] above the wrist.
8. Blows that land outside the legal target areas shall not be counted, unless an illegal target area has been intentionally placed in the path of an impending blow.

In Drachenwald, the areas described are interpreted as follows.



D. Combat Archery Conventions

1. Upon a hold being called, all archers must unload their weapons (crossbows may remain cocked). Archers may nock an arrow on their bow or load their crossbow at "make ready" (or equivalent) and may fire when "Lay on" is called.
2. Archers may have a backup weapon on them, but may not draw it until their bow/crossbow has been safely disposed of (taken off the field, discarded in a low

traffic area, handed to another combatant, etc.). Upon drawing a backup weapon to enter combat, hands must be appropriately armored.

3. Archers may carry and use thrown weapons without need to discard their bow/crossbow or change hand armor.
4. Archers need to be aware of what is beyond their target area to ensure that errant shots do not endanger anyone.
5. An archer's minimum range is dictated by ensuring that the ammunition completely clears the bow/prod before contacting the opponent.
6. Ammunition dropped onto the ground is considered dead as if it had been fired, and needs re-inspection.
7. Live combatants may pick ammunition off the field for re-inspection (as long as re-inspection is allowed during the scenario) and reuse it during the same battle. Dead combatants may clear ammunition from the field for use in future battles if scenario rules allow.
8. Within scenario limits, ammunition may be taken from caches stored on or off the field and from other combatants (dead or alive) with permission of the owner.

A. Weapons shall be used in accordance with their design. For example, spears may only be used for thrusting, axes for striking along the edge of the blade, etc.

1. Only weapons approved for thrusting may be used for that purpose. Feinting as if to thrust with a weapon not approved for that purpose is prohibited. Before any bout where a thrusting weapon is used, the opponent and marshals shall be informed that such a weapon is on the field, and the thrusting tip shall be shown to the opponent.
2. The blade of an opponent's weapon may not be grasped at any time, nor may it be trapped in contact with the fighter's body as a means of preventing the opponent's use of the weapon. Armored hands may grasp the haft of an opponent's weapon.

B. The striking surface of a weapon in motion may not be grasped or blocked by the hands or limbs as a means of impeding a blow.

1. If a combatant intentionally places an illegal target area (e.g., an empty hand and or lower leg, including the knee and foot) in the path of a blow, the combatant forfeits that attached limb as if it had been struck in a legal target area.
2. Inadvertently bringing the hands in contact with the striking surface of a weapon in motion, as when attempting to block a blow with another weapon, shall not be considered to be in violation of this convention.

C. Blows repeatedly blocked by a weapon in contact with a fighter's helm, body, or shield at the moment of impact may, at the sovereign's or marshal's discretion, be considered to have broken the blocking weapon. This will force a fighter to forfeit the fight, unless a secondary weapon is carried or the opponent chooses to allow the fighter to rearm with another weapon. *In Drachenwald, "repeatedly" is interpreted as three or more times in a given bout or melee.*

D. A shield or weapon may be used to displace, deflect, or immobilize an opponent's shield

or weapon, so long as such use does not endanger the safety of the combatants. A shield or haft may be safely placed against the opponent's body to restrict his ability to strike or defend.

E. Shields must be controlled by the hand; use of passive shields (not controlled by the hand) will be treated as decorative armor and subject to effective blow acknowledgment. *In Drachenwald, this is interpreted to mean to control a shield by the hand, a fighter must be able to move a shield simply by moving their wrist and / or hand. Further, any hand controlling a weapon cannot also control a shield.*

F. A combat archer may carry and use shield or pavise; however, as long as they are carrying it, they cannot span their weapon.

A. Judging the effects of blows is left to the honor of the combatant being struck by the weapon, unless he or she relinquishes this responsibility, with the exception of clear violations of the Rules of the Lists or the Conventions of Combat. Effectiveness of a blow may not be judged by the opposing combatant, the marshal on the field, or other observers. Information unavailable to the combatant being struck may be supplied by the opposing combatant or the marshal, including blade orientation upon impact, apparent force transmitted, or apparent location and angle of the blow's impact based upon the observer's angle of observation. *In Drachenwald, it is interpreted that combatants who note that their own blows strike ineffectively are encouraged to provide that information to an opponent who would otherwise acknowledge that blow. For example, when striking with anything other than the striking surface, the person who threw the blow should call "Haft!" or "Flat!" as appropriate to their opponent.*

B. When judging the effect of blows, all fighters are presumed to be fully armored. Special tournaments or combat rules may redefine what areas of the body are armored, and to what extent, so long as all the participants are made aware of the special conditions prior to the start of combat.

1. All "fully armored" fighters are presumed to be wearing a chain hauberk over a padded gambeson, with boiled leather arm and leg defenses and an open-faced iron helm with a nasal. The helm may be presumed by kingdom convention to include a very light chain mail drape, permitting vision and resisting cuts by the mere touch of a bladed weapon. *In Drachenwald, kingdom convention includes such a drape.*
 - a. Under this standard, an acceptable cutting blow to the face would be lighter than to other portions of the head or body. Areas deemed illegal to strike (the wrists from 1 inch [25.4mm] above the hands; the legs from 1 inch [25.4mm] above the knees and below) shall be considered safe from all attack.
 - b. The minimum effective thrusting blow to the face shall be a directed touch and the maximum shall be substantially lighter than to other parts of the body.

C. An effective blow will be defined as a blow which was delivered with effective technique for the particular type of weapon used, properly oriented, and struck with sufficient force.

1. An effective blow to the head, neck, or torso shall be judged fatal or completely disabling, rendering the fighter incapable of further combat. *In Drachenwald, this is interpreted to mean an effective blow to the face is also fatal or completely disabling.*
2. An effective blow from an axe, mace, polearm, great sword, or other mass weapon, which lands on the hip above the hip socket or strikes the shoulder inside the

shoulder socket, shall be judged fatal or completely disabling.

3. An effective blow to the arm above the wrist will disable the arm. The arm shall then be considered useless to the fighter and may not be used for either offense or defense.
4. An effective blow to the leg above the knee will disable the leg. The fighter must then fight kneeling, sitting, or standing on the foot of the uninjured leg. Kingdoms may place limitations upon the mobility of such injured fighters. *In Drachenwald, there is no additional limitation.*
5. If a wounded limb blocks an otherwise acceptable blow, the blow shall be counted as though the limb were not there.

D. Changes to blow acknowledgment standards may be made on a per-combat, per-scenario, or per-tournament basis, but thereafter will revert to the standards above. Alternate acknowledgment standards do not alter the allowed target areas, nor do they increase the basic force level for a telling blow. All combatants must be informed of any changes to standard blow acknowledgment before they participate in the combat.

E. When judging the outcome of a delivered blow, all fighters are expected to take into account the nature of the weapon being used by their opponent and the location of the point of impact of that weapon. A blow that strikes with sufficient force and proper orientation shall be considered effective, regardless of what it hits prior to striking the combatant.

F. Sometimes a blow that would normally be accepted occurs at almost the same moment as an event that would cause the fight to be stopped (a "HOLD" being called, the killing of the fighter throwing the blow, etc.). If the blow was begun before the occurrence of the event that would cause the bout to be halted, and if of sufficient force, it shall be deemed a legal blow and acceptable. If the blow was begun after the occurrence of the event that would cause the bout to be halted, it shall be deemed not legal and need not be accepted.

G. A blow that includes the dropping of a weapon at the moment of impact need not be counted. (Note: If the force of the blow causes the weapon to be dropped, the rule shall be suspended.)

H. Owing to safety limits placed on combat archery equipment, and the low mass of the ammunition, arrows and bolts strike with less force. They need not strike with the same force as hand-held weapons for the strikes to be considered killing blows. This does not transfer the responsibility of judging the effects of blows to the archer, as it is left to the honor of the combatant being struck by the weapon to judge the effects.

I. Weapons (*thrown weapons*, bows and crossbows) that are under-powered have not historically delivered enough force for a fighter to notice a hit in battle. Please be aware of all the factors that impact blow calibration for combat archery, including target area, weapon strength and ammunition choice. *In Drachenwald, good blows from ranged weapons affect a target in the same manner as if struck by a regular melee weapon (e.g. a single-handed sword), but not as if struck by a "mass weapon".*

A. Armored Participants

All participants on the field during adult armored combat shall meet the Society minimum armor standards for a fully armored combatant. This includes, but is not limited to, combat archers, siege engineers and other combatants.

It does not include marshals, water-bearers, or surgeons. All authorized combatants and warranted marshals shall disguise, cover, or remove modern corporate logos and sport gear unless the gear is necessary for medical reasons. Special attention should be paid to appearance and the atmosphere of a medieval event should be maintained.

Required armored areas must stay covered during typical movement.

B. Helms

In Drachenwald, the entire face and head, excluding the neck, must be protected as described here.

1. Helms shall be constructed from steel which has a thickness of no less than .0625 (that is, 1/16) inch (1.6 mm), or of equivalent material. Alternative materials, such as stainless steel, brass, bronze, or like materials, are permissible as long as the material is structurally equivalent to 0.0625-*inch thick* steel. The mass of the helm is an important part of the protection. As such, no titanium, fiberglass, aluminum, or other ultra-light materials may be used unless they meet the equivalent mass, strength, and weight of steel which has a thickness of no less than .0625 (that is, 1/16) inch (1.6 mm). Proof of construction technique, materials, and equivalency must be provided to the kingdom earl marshal (KEM) for an approval for in-kingdom use. If a spun-metal top is to be used in the construction of the helm, it shall be a minimum of 0.075 inch (14-gauge or 1.905 mm) steel. The process of spinning the top thins the metal, thereby requiring a heavier gauge.
2. All joints or seams shall be constructed in one or a combination of the following ways, with all welds sound and rivets secure:
 - a. Welded with a single bead that extends through both surfaces.
 - b. Lap joints welded or brazed at the edges of both pieces.

Helms will be riveted in their primary construction with steel or stainless steel rivets 1/8in (3.18mm) or greater in diameter and no more than 1.5 inches (38.1 mm) apart, steel, stainless steel, or brass rivets 3/16 in (4.76mm) or greater diameter and no more than 2.5 inches (63.5mm) apart or with equivalent riveting techniques. Screw- and pop-type rivets, along with other lightweight rivets, are not to be used.

3. Face guards shall prevent a 1 inch (25.4mm) diameter dowel from entering into any of the face guard openings.
4. The face guard shall extend at least 1 inch (25.4mm) below the bottom of the chin and jaw line when the head is held erect.
5. Bars used in the face guard shall be steel of not less than .1875 (that is, 3/16) inch (4.8 mm) in diameter, or equivalent. If the span between crossbars is less than 2 inches (50.8 mm), .125 (that is, 1/8) inch (3.18 mm) diameter bars may be used.
6. All movable visors shall be attached and secured in such a way that there is minimal chance that they will become detached or come open in normal combat use.
7. There shall be NO major internal projections; minor projections of necessary structural components shall be padded. All metal shall be free of sharp edges. Face guard bars or mesh should not attach to the interior of the helm, unless of structurally superior design and workmanship.
8. All parts of the helm that might cause injurious contact with the wearer's head shall

be padded with a minimum of .5 inch (12.7 mm) of closed-cell foam or equivalent padding, or shall be suspended in such a way as to prevent contact with the wearer during combat. Similarly, parts of the inside of the helm that might come in contact with the wearer's neck or body should be padded.

9. All helms shall be equipped with a chin strap or equivalent means to prevent the helm from being dislodged or metal contacting the wearer's face during combat. An equivalent might be, for example, a bevor or a chin-cup suspension system. A "snug fit" is NOT an equivalent. The chin strap shall be, at a minimum, .5 inch (12.7 mm) in width and shall not be placed in the helm in a manner that could strangle the wearer.

C. Eye Wear

The lenses of all eyewear shall be constructed of shatterproof industrial safety glass or plastic. Ordinary glass lenses are prohibited. The wearing of contact lenses or "sports glasses" is strongly recommended.

D. Neck Armor

The neck, including the larynx, cervical vertebrae, and first thoracic vertebra must be covered by one or a combination of the following and must stay covered during typical combat situations, including turning the head, lifting the chin, etc.:

1. The helm
2. A gorget of rigid material
3. A mail or heavy leather camail or aventail that hangs or drapes to absorb the force of a blow. If the camail or aventail lays in contact with the larynx, cervical vertebrae, or first thoracic vertebra, that section must be padded with a minimum of .25 inch (6mm) of closed cell foam or equivalent
4. A collar of heavy leather lined with a minimum of .25 in (6mm) of closed cell foam or equivalent

E. Body, Shoulder, and Groin Armor

In Drachenwald, the body, shoulder and groin must be protected as described here.

1. The kidney area and the floating ribs shall be covered with a minimum of heavy leather worn over .25 inch (6 mm) of closed-cell foam or equivalent padding.. More coverage is strongly suggested.
2. The groin must be protected to a standard equivalent to that provided by an athletic cup or pubic protector, secured by straps, or worn in a supporter or fighting garment designed to hold the protection in place.
3. Separate breast cups are prohibited unless connected by or mounted on an interconnecting rigid piece, for example, a heavy leather or metal breastplate.
4. Non Newtonian padding such as Zoombang will be considered only as padding for meeting armor requirements

F. Hand and Wrist Armor:

The outer surfaces of the hand, to one inch above the wrist of both arms and including the

thumb, must be covered by one or a combination of the following:

1. A rigid basket or cup hilt with enough bars or plates to prevent a blow from striking the fingers or the back of the hand. If a basket or cup hilt, shield basket, or center-grip shield is used, a vambrace and or partial gauntlet shall cover the remaining exposed portions of the hand and wrist.
2. A gauntlet of rigid material either lined with .25 inch (6 mm) of closed-cell foam or equivalent or designed to transfer potentially injurious impact to the surfaces being grasped.
3. A gauntlet of heavy leather lined with .5 inch (12 mm) of closed-cell foam or heavy padding. (Note: An ice hockey glove is considered to be the equivalent, but looks blatantly modern; their use is discouraged.) Street hockey gloves are NOT equivalent, as the padding is lighter than a regular ice hockey glove. Street hockey gloves and similarly padded gloves will be treated only as padding.
4. A shield with a shield basket or equivalent. A shield alone is NOT sufficient, since it covers the back of the hand, but not the fingers, thumb, or wrist. A shield alone may be considered an equivalent to full hand protection only if no part of the hand or wrist is within 4 inches (10.2 cm) of the edge of the shield while the shield is in use.
5. Combat archers, siege engineers, and those using a thrown weapon, need only a half-gauntlet made to the above standards for gauntlets but without finger protection.

G. Arm Armor

In Drachenwald, arm armor requirements are added to the Society requirements. The elbow point and bones at either side of the elbow joint *and the leading forearm bone opposite the thumb (ulna)* must be covered by a rigid material underlain by at least .25 inch (6 mm) of closed-cell foam or equivalent padding. This armor shall be attached in such a way that the elbow remains covered during combat. A shield alone is sufficient *for elbow protection* on a side-strapped shield, if the padded elbow is 4 inches (10.2 cm) or more from the edge of the shield during typical use. *A shield alone is sufficient for ulna protection on a side-strapped shield, if all parts of the ulna are 4 inches (10.2 cm) or more from the edge of the shield during typical use. It is recommended that fighters protect their entire forearms with armor.*

I. Leg Armor

In Drachenwald, the leg must be protected as described here.

1. The kneecap, including the area one inch (25.4 mm) above and below it, and both sides of the knee joints, must be covered by rigid material, lined by at least .25 inch (6 mm) of closed-cell foam or an equivalent padding. This armor shall be attached in such a way that the knee remains covered during combat.
2. Combatants should wear footwear that provides adequate protection and support for the terrain and activity of combat.

J. Shields

1. Shields shall be edged with leather, padding, or other covering or constructed in such a way as to minimize damage to rattan weapons or other fighters.
2. No bolts, wires, or other objects may project more than .375 (that is, 3/8) inch (9 mm) from any part of a shield without being padded. Rounded shield bosses are not

considered to be projections.

3. Shields may be constructed with leg(s) so that they can act as freestanding pavises during melee combat.
 - a. The leg(s) used to keep the pavise standing must be at least 1.25 inches (31.8 mm) in diameter or 1.25 inches (31.8 mm) square and be well attached.
 - b. Pavises are destroyed by a single hit from siege engine ammunition. Combatants behind the pavise are not killed. The pavise must then immediately be removed from the field or dropped flat.
 - c. A pavise can be carried in a manner which does not require hand control (such as by a shoulder strap). In this case, the fighter is not allowed to actively block with it, nor can they use their own weapon, and if struck by a hand weapon, the blow is counted as if the pavise was not there.

A. General

1. With the exception of the hilts, guards and pommels, no metal or non-approved rigid, granular, or liquid material may be used in the construction of single or two-handed weapons including spears.
2. Primary weapons used single-handed shall have a wrist strap (or equivalent restraint) which will keep the weapon from leaving the immediate area of the user if released during any part of a bout or combat. Restraints are not required on hafted weapons used single-handed, or on single-handed back-up weapons. This requirement may be waived during Melee combat if deemed safe to do so.
3. Flails are expressly prohibited.
4. Mechanical devices known as "sliders", which are used to guide or propel spears, are prohibited.
5. All weapons shall have all cutting edges and thrusting tips marked in a contrasting color.
6. The striking surfaces of all weapons, including the tip, shall be wrapped in a manner that allows no rattan splinters to protrude.
7. All thrusting tips and striking heads must be securely attached to the weapon.
8. The edges and tips of all striking surfaces shall be rounded.
9. No part of a weapon shall have sharp edges or protrusions with cross-section of less than 1.25 inches (31.8mm) in diameter. Guards, pommels, hooks etc., shall be firmly and securely affixed to the weapon haft.
10. It shall not be possible to force into a legal face guard, any part of a weapon which may reasonably be expected to contact an opponent during combat more than .5 inch (12.7mm). Rattan weapons may have a handle section which is less than 1.25 inches (31.8mm) so long as it meets this criterion. Combat archery shafts may be thinner as long as the head and tail meet the criteria.
11. Rattan shall not be treated in any way that will substantially reduce its flexibility (e.g.,

treated with wax, resin, fiberglass, rawhide , etc.). *In Drachenwald, wrapping rattan in standard, fiberglass filament tape is not interpreted as substantially reducing flexibility.*

12. No weapon shall exceed 6 pounds (2.73 kg). *In Drachenwald total weapon length shall not exceed 9 feet (2.743 m).*
13. No missile weapons intended to simulate firearms, slings, sling-staffs, nor atlatls can be used on the field of armored combat.
14. No “punch weapons” or thrusting weapons that have the blade or tip more perpendicular than parallel to the grip.
15. No shovel handles on any thrusting weapon.

B. Single-Handed Weapons

Weapons that shall be used in one hand shall have the following requirements:

1. Single-handed weapons shall be constructed of one of the following:
 - a. rattan
 - b. rattan-cored Siloflex or Siloflex-equivalent
 - c. natural polypropylene round rod (maximum diameter: 1.25 inches (31.8 mm)), *In Drachenwald, weapons may not be constructed of natural polypropylene round rod.*

and shall be not less than 1.25 inch (31.8 mm) in total diameter (including tape) along its entire length excepting the handle.

2. Rattan-cored Siloflex or Siloflex equivalent weapons shall be constructed using tubular materials meeting ASTM standard D-2239 or the international equivalent, with a pressure rating of 160 PSI or greater, having at least a 1.25 inch (31.8 mm) diameter on the outside and at least .125 (that is, 1/8) inch (3.2 mm) walls, and having an inner core of rattan that fills the interior of the tubular material entirely. Periodic inspection shall be made to determine the condition of the inner core.
3. If the weapon has a head, it shall not be constructed of solely rigid materials. The head shall be firmly and securely attached to the haft. The head shall allow at least .5 inch (12.7 mm) of progressive give between the striking surface and the weapon haft.
4. No weapon may have a cutting and/or smashing surface at both ends.
5. When thrusting tips are used, they shall be at least the same diameter as the shaft of the weapon they are mounted on and have at least .75 inch (19.1 mm) of resilient material in front of the rigid tip of the weapon providing at least .375 (that is, 3/8) inch (9.53 mm) of progressively resistant give across the face of the thrusting tip. (Note: Pressing with the thumb into the center of the thrusting tip is not an adequate test. The give must be across the entire face of the tip.)
6. Swords shall have a hand guard, such as a basket hilt, quillons, or equivalent.
7. Total weapon mass shall not exceed 5 pounds (2.27 kg).

C. Two-Handed Weapons

Weapons which may be used with one or two hands shall have the following requirements:

1. Weapons shall be constructed of rattan of not less than 1.25 inch (31.8 mm) in diameter (including tape) along its entire length. Two handed swords, great swords, and bastard swords may have a handle area less than 1.25in (31.8 mm). Polearms may contain blades constructed of split rattan, so long as the piece(s) are securely fastened to the haft.
2. The weapon shall not be excessively flexible.
3. If the weapon has a head, it shall not be constructed of solely rigid materials. The head shall be firmly and securely attached to the haft. The head shall allow at least .5 inch (12.7 mm) of progressive give between the striking surface and the weapon haft. Semi-rigid ultra-lightweight shaped foam heads and laminated or split rattan construction techniques do not require .5 inch (12.7 mm) of progressive give, so long as their construction imparts striking characteristics similar to an unpadded weapon constructed of a single piece of rattan.
4. No weapon may have a cutting and/or smashing surface at both ends.
5. Thrusting tips:
 - a. When thrusting tips are used on rattan weapons with greater length than 7.5 feet (2.286 m), they shall be no less than 2 inches (50.8 mm) in diameter/cross- section and have 2 inches (50.8 mm) of resilient material in front of the rigid tip of the weapon, thereby providing progressively resistant give.
 - b. When thrusting tips are used on rattan weapons with length less than or equal to 7.5 feet, they shall be at least the same diameter as the shaft of the weapon they are mounted on and have 1.5 inches (38.1 mm) of resilient material in front of the rigid tip of the weapon, thereby providing progressively resistant give.
 - c. (Note: Pressing with the thumb into the center of the thrusting tip is not an adequate test. The give must be across the entire face of the tip.)
6. Weapons exceeding 7.5 feet (2.286 m) shall not be used for cutting or smashing and shall be used for thrusting only.
7. Total weapon length shall not exceed 12 feet (3.658 m). *In Drachenwald total weapon length shall not exceed 9 feet (2.743 m).*

D. Fiberglass Spears

1. Fiberglass spears shall not have a cutting or smashing head.
2. Fiberglass spears shall be constructed with pultruded fiberglass shafts with an outside diameter of no less than 1.25 inches (31.8 mm) and no greater than 1 5/8 inch (33.38mm). Minimum manufacturer specified wall thickness shall be .125 (that is, 1/8) inch (3.2 mm) and the minimum measurable wall thickness shall be 3/32 inch (2.38 mm).
3. The end of the shaft which will have the thrusting tip attached must be covered with a schedule-40 PVC cap with an interior diameter the same as the outside diameter of the shaft (1.25 inches or 31.8 mm). The thrusting tip will then be attached over this cap.

4. All fiberglass spears must have a thrusting tip that is a minimum of 2 inches (50.8 mm) in diameter/ cross-section and have 2 inches (50.8 mm) of resilient material in front of the PVC end cap, thereby providing progressively resistant give without allowing contact with the PVC end cap.
5. Shafts may be spliced using a fiberglass rod or tube with a sidewall of .125 inch (3.2 mm) of the same or equivalent material, having an outside diameter of 1 inch (25.4 mm) and a length of 8 - 12 inches (203 – 304 mm). Only two splices will be allowed per spear shaft. Each end to be spliced shall be cut square and clean of cracks or frayed fibers. The rod shall extend at least 4 inches (101.6 mm) into each spliced end. One or both of these two methods shall secure the splice:
 - a. Shafts Epoxying both ends of the fiberglass rod before insertion.
 - b. Epoxying one end of the fiberglass rod before insertion and thoroughly taping the splice over with fiber tape.

The butt end of the shaft shall be smooth and free of cracks or frayed fibers. The butt shall be taped over or otherwise sealed. If a weapon is completely taped, ap ver zfpd

4. The weapon must have the owner's name, kingdom, and branch clearly and legibly printed on it in English characters for identification.
5. Total mass of the weapon shall not exceed 2 pounds (0.91 kg).

F. Combat Archery Bows/Crossbows

1. During inspection, all equipment must have its poundage and draw physically measured with a ruler or other metered device and poundage scale.
2. Marshals must calibrate their bow scales regularly to be accurate at either 35 or 50 pounds, depending upon the most prevalent bow in their kingdom, as measurements obtained with commonly-used, standard spring-type scales can vary over time.
3. No compound bows, nor compound crossbow prods are allowed.
4. No non-Society period sights, spring/flipper rests, plunger buttons, stabilizers, clickers, or modern string release aids may be used.
5. Bows/Crossbows must be powered solely by the flex of the limbs.
6. If both Light and Heavy bows/crossbows, by the standards as defined below, are on the field at the same time, then all Heavy bows/crossbows must have their upper limb (or one limb for crossbows) covered with at least 4 inches (10 cm) of red material (tape, cloth, etc).
7. Handbows
 - a. A handbow's power is measured at 28 inches (71 cm). If the bow is not designed to be drawn at 28 inches (71 cm), then it cannot be used in SCA combat. In Drachenwald, the minimum measurement for all handbows is 20 pounds (9.1 kg) at 28 inches (71 cm).
 - b. Light handbows measure 35 pounds (15.9 kg) or less at 28 inches (71 cm).
 - c. Heavy handbows measure 50 pounds (22.7 kg) or less at 28 inches (71 cm).
8. Crossbows
 - a. Crossbows are measured by inch-pounds ("#), which is calculated by taking the poundage of the bow measured at the lock, multiplied by the distance (in inches) from the front of the string at rest, to the front of the string when in cocked position. A metric measurement of kilogram-centimeters (kg-cm). In Drachenwald, the minimum measurement for all crossbows is 400"# (461 kg-cm).
 - b. Light crossbows measure 600"# (691 kg-cm) or less.
 - c. Heavy crossbows measure 1000"# (1152 kg-cm) or less.
 - d. No crossbows may have a modern pistol grip.

G. Combat Archery Ammunition

1. All ammunition must have the owner's name (not initials) and kingdom displayed clearly on it.

2. No metal can be used as ammunition construction material.
3. All ammunition has a maximum length of 28 inches (71 cm) from the back of the head/blunt, to the string acceptor on the nock.
4. Optionally, ammunition may have fletches as long as they are securely attached and made of a soft material. Fletches may not project farther than .5 inch (12.7 mm) from the shaft if they are less than 1.5 inch (38.1 mm) thick.
5. Light Ammunition (for use in light bows or light crossbows only) must consist of a fiberglass shaft, a blunt (either commercially manufactured or UHMW) and an APD (either commercially manufactured or HDPE).
 - a. Fiberglass Ammunition Shafts
 - i. Solid pultruded fiberglass of between .25 (6.5 mm) and .375 inch (9.5 mm) diameter.
 - ii. Fiberglass shall be of a good quality, defined as significant 'bending' pressure as applied by a marshal not causing the shaft to break.
 - iii. The shaft must be covered from behind the blunt, to the front of the anti-penetration device (APD), in a sturdy tear-resistant tape, such as strapping, electrical, or duct tape.
 - b. Anti-Penetration Devices (APDs)
 - i. APDs must be attached no further than .5 inch (12.7 mm) from the end of the arrow or bolt (including nock).
 - ii. APDs must be attached securely via tape, glue, cable ties, etc. The method does not matter as long as it is securely attached and will not come off during normal use. This will be tested by Marshals by grabbing and pulling on the APD with moderate force while twisting it slightly. If it detaches or moves lengthwise along the shaft, then it fails.
 - iii. APDs must not have major cuts or cracks in them. If anything can be inserted into a crack, then the APD fails.
 - c. HDPE APDs
 - i. HDPE Pipe: APD made from materials meeting ASTM D2239 (minimum of 1 inch (25.4mm) inner diameter) or ASTM D2737 (minimum of 1.25 inch (31.8mm) outer diameter) and manufactured of PE3408, PE3608, PE3710 or PE4710 resin, or equivalent. 100 PSI up to 160 PSI is approved.
 - ii. The length of the top edge of the APD must be at least 1.25 inches (3.2 cm) if the front is cut square, or .625 (that is, 5/8) inch (16 mm) if the front is cut at a 45 degree angle.
 - iii. APD may have a channel routed in the bottom, and/or cuts made in the front and back edges for helping tape attachment.
 - iv. All sharp edges must be eased.
 - d. Commercially Manufactured APDs

- i. Allowed commercial APSs: Asgard only.
 - ii. All other designs or manufacturing techniques must be approved in writing by the Society Marshal's office prior to use. Contact the Deputy Society Marshal for Combat Archery for details for submission and testing of experimental combat archery missiles.
 - iii. Commercial APDs may have only the following modifications: Cutting the nock off flush for use on a crossbow, making small holes for helping attachment, and roughing the interior surfaces for gluing.
- e. Blunts
- i. All blunts must be securely attached via tape, glue, cable ties, etc. The method does not matter as w

(3.81 mm) after taping. The front edges of the blunt must be rounded over.

- v. All sharp edges must be eased.
 - vi. As long as all other requirements are met, the blunt may have material removed for aerodynamic or weight reducing purposes.
6. Heavy Ammunition (for use in heavy bows, heavy crossbows, light bows, or light crossbows) must consist of a tubular shaft and approved head.
- a. Tubular Ammunition Shafts
 - i. The shaft must be constructed of HDPE Pipe from materials meeting ASTM D2239 (minimum of 1 inch (25.4mm) inner diameter) or ASTM D2737 (minimum of 1.25 inch (31.8mm) outer diameter) and manufactured of PE3408, PE3608, PE3710 or PE4710 resin, or equivalent. Either 100 or 125 PSI is approved.
 - ii. The tail must be left solid for at least 1 inch (25.4 mm). Cuts may be made beyond that in order to install fletches if desired but must have holes drilled at the ends of each cut to keep the cut from spreading. The tail may be slit if a 1 inch (25.4 mm) or longer section of HDPE Pipe is reinserted at the end and laced in place.
 - iii. A nock may be cut into the tail end but may be no deeper than .5 inch (12.7 mm). Wooden nocks can be installed as long as they are securely attached by drilling and lacing with string.
 - b. Heads
 - i. Regardless of the construction method, the head must be firmly attached by the use of tape and/or string. Marshals will check head attachment by pulling on them with a moderate level of force and twisting slightly. If the head shows signs of loosening, it fails inspection.
 - c. Rubber Stopper Head
 - i. A rubber stopper, size 6.5, is placed in the end of the tube such that it enters the tube at least .5 inch (12.7 mm) and is well attached.
 - ii. Resilient padding of at least .5 inch (12.7 mm) and at most 1.25 inch (31.8 mm), after taping, is then added on top of the head and be at least the same diameter as the head.
 - iii. The head must have padding (with progressive resistant give) that extends from the tip of the padding to at least .5 inch (12.7 mm) over the rubber stopper to bring the total diameter of the head to at least 1.5 inch (3.8 cm) after taping.
 - d. Baldar Blunt Head
 - i. Baldar blunts may be used by cutting the support fins away so that the blunt slides over the HDPE Pipe and attaches securely.
 - ii. Resilient padding of at least .5 inch (12.7 mm) and at most 1.25 inch (31.8 mm), after taping, is then added on top of the head and be at least the same diameter as the head.

- iii. The head must have padding (with progressive resistant give) that extends from the tip of the padding to at least .5 inch (12.7 mm) over the Baldar blunt to bring the total diameter of the head to at least 1.5 inch (3.8 cm) after taping.
 - iv. Any classic style of Baldar Blunt can be used in this manner, whether 1- or 2-piece mold or designed for fiberglass or wood.
 - e. Crutch Tip Head
 - i. A crutch tip is placed on the end of the tube such that it covers the tube at least .5 inch (12.7 mm) and is well attached.
 - ii. Resilient padding of at least .5 inch (12.7 mm) and at most 1.25 inch (31.8 mm), after taping, is then added on top of the head and be at least the same diameter as the head.
 - iii. The head must have padding (with progressive resistant give) that extends from the tip of the padding to at least .5 inch (12.7 mm) over the crutch tip to bring the total diameter of the head to at least 1.5 inch (3.8 cm) after taping.
 - iv. Ensure there is no metal in the crutch tip, as no metal may be *(used)* in ammunition construction.
 - f. Tennis Ball Head
 - i. A tennis ball is placed at the end of the tube and attached via tape and/or string. The ball shall not be perforated as this leads to it getting dirt/water inside of it.
 - ii. Regulation tennis balls may be used as ammunition heads, as is, with the following restrictions: Ball must weigh less than 3 ounces (85 grams). Ball must not be covered in tape. (Dyes or stains may be used to change the color)

7. Fellwalker Bolts

- a. The "Fellwalker design" is approved for crossbows only (heavy and light)
- b. The shaft is of solid fiberglass of between .25 inch (6.5 mm) and .375 (that is, 3/8) inch (9.5 mm) diameter. Fiberglass shall be of good quality, defined as significant bending pressure as applied by a marshal not causing the shaft to break.
- c. The core is made from UHMW rod of at least 1.25 inches (31.8 mm) diameter with a hole drilled in it to accept the shaft.
- d. The shaft hole must be at least 1 inch (25.4 mm) deep, and there must be at least 1 inch (25.4 mm) of UHMW in front of the shaft.
- e. The striking surface must have at least 1 inch (25.4 mm) and at most 1.25 inches (31.8 mm) of padding (with progressive resistant give) after taping and be at least the diameter of the blunt.
- f. The head must have padding (with progressive resistant give) that extends from the tip of the padding to at least .5 inch (12.7 mm) over the UHMW that brings the total diameter of the head to at least 1.5 inch (3.8 cm) after taping.

- g. The tail end must have a disk of UHMW installed that is at least 1.25 inches (31.8 mm) diameter, at least .5 inch (12.7 mm) thick, and drilled at least .25 inch (6.5 mm) deep to accept the shaft. It must be attached securely via tape, glue, cable ties, etc. The method does not matter as long as it is securely attached and will not come off during normal use. This will be tested by Marshals by grabbing and pulling on the APD with moderate force while twisting it slightly. If it detaches or moves lengthwise along the shaft, then it fails.
- h. The shaft must be covered from behind the blunt, to the front of the anti-penetration device (APD), in a sturdy tear-resistant tape, such as strapping, electrical, or duct tape.
- i. All sharp edges must be eased.

A. General

Siege engines or structures may be used in combat during melees and wars in accordance with the rules set forth in the Siege Engines Handbook.

B. Munitions

1. Siege-class munitions are denoted by being primarily yellow and include ballista bolts and rocks (1-pound [0.45 kg] foam or 4-tennis-ball clusters).
2. Small-arms munitions include single tennis balls and tube shafted combat archery arrows and bolts.

C. Blow Acknowledgment

1. A blow from siege class ammunition to any legal target area shall be judged fatal or completely disabling.
2. Blows from siege class ammunition to shields shall be judged fatal or completely disabling to the bearer of the shield unless otherwise specified by scenario rules.
3. Hand-held weapons struck by siege class munitions shall be considered destroyed.
4. Small-arms munitions fired from siege engines shall be treated as combat archery projectiles.
5. Siege munitions are considered spent upon striking a target, the ground, or a battlefield structure.

D. Destroying Siege Engines.

1. Fighters shall stay clear of moving parts and, when possible, approach siege engines/structures from the side.
2. Striking or thrusting siege engines/structures with hand-held weapons is strictly prohibited.
3. Siege engines may be destroyed by placing a hand-held weapon on the engine/structure and declaring "this weapon is destroyed," or by being struck by

siege-class munitions from another siege engine.

4. Siege engine crews are fully armored combatants and should be treated as would be any other fighter on the field.
5. If fighting occurs within 5 feet (1.524 m) of an engine that is cocked or loaded, a hold shall be called and the engine shall be declared destroyed and removed from the combat area and made safe.

A. General Requirements

There are three near-equal priorities in marshaling; safety, fair witness, and showmanship. Overemphasizing any one of these at the expense of the others will tend to make the fighting less enjoyable for everyone (although, if you must go overboard on one, pick safety).

1. A marshal may be authorized after demonstrating the ability to oversee combat, judge a fighter's authorization, and inspect weapons and armor.
2. Unless warranted or rostered by the Earl Marshal as an officer of the kingdom, a marshal may not be the marshal-in-charge (MIC) of an event or sign the paperwork to authorize fighters.
3. Kingdoms may have other types of Marshals other than Authorized Marshals (local Knight Marshals, Constables, etc.) as they see fit. These individuals may be warranted or rostered by the Earl Marshal of the Kingdom. However, unless the marshal has undergone a Marshal's Authorization, they shall not give final approval of the suitability of weapons or armor, or be involved in the authorization of combat participants. *In Drachenwald, "Authorizing Marshals" are a type of Marshal that may perform a fighter authorization as described in XIV when there is no member of the Chivalry available to oversee the procedure.*
4. Only the Earl Marshal or designated Deputy Earl Marshal(s) may perform a Marshal's Authorization. They must witness the authorization and execute the appropriate paperwork to ensure that the authorization is registered. At a minimum, a Marshal's Authorization shall include the following:
5. The candidate must have a good working knowledge of the Rules of the Lists, the Society Conventions of Combat, and any additional kingdom rules or conventions.
 - a. The candidate must be willing to enforce the Rules of the Lists, the Society Conventions of Combat, and any additional kingdom rules or conventions.
6. The candidate must have a good working knowledge of the Society minimum armor and weapons standards and any additional kingdom armor and weapons standards.
7. The candidate must demonstrate the ability to conduct an inspection of armor and weapons for use in combat.
8. The candidate must demonstrate the ability to conduct an inspection of combatants.
9. The candidate must demonstrate the ability to safely control SCA combat, whether this is single combat, team combat, general melee, or part of a war environment.
10. The term "Knight Marshal" applies to the marshal of a branch. This title of office is used regardless of whether the marshal is a belted fighter; in fact it is used whether

or not the branch marshal i

3. When “Hold!” is called, all fighting shall cease.
 - a. Fighters shall drop to one knee (if possible) where they stand.
4. Conversations relating to the conduct of the battle are not permitted between combatants.
5. Changes of position/location are not permitted, unless ordered by a marshal.
6. If movement away from a boundary of a hazard is necessary, the fighters shall maintain their relative positions and distances.
7. To end a hold, the marshal-in-charge will call “All rise!” (or “Rise if you’re able” or some other equivalent statement). When the combatants have resumed their guard, the marshal-in-charge will call “Lay on!” to signal the resumption of the fight.
8. “Hold!” will normally be called only for broken armor, lost tempers, injuries, safety concerns, outsiders wandering onto the field, fighters about to wander off it, or to enforce the rules and scenario limits.
9. “Hold!” should not be called for dropped weapons, fighters who have slipped and fallen (unless they are in danger of injury), or the near approach of a fighter to a boundary where there are neither spectators nor any natural hazards, such as cliffs.
10. Marshals have the (*peremptory*) authority to remove from combat and from the field any combatant who violates the rules or scenario limits or who performs any unsafe or dishonorable act. Such removal may be discussed during the battle only if the marshal permits it. The marshals’ ruling may be appealed to the Marshal in Charge.
11. Marshals have the authority to regulate the movement of non-combatants on and near the field and to control the location of spectators.
12. Those marshals who are responsible for marshaling wars or large melees may use alternative means to signal “Hold” or “Lay on,” as long as all fighters and marshals know and understand the alternative signaling system. Marshals may use whistles, air horns, or other such devices.

A. When combat archery is present on the field all marshals, heralds, etc. on the field must wear protective shatterproof eyewear, such as safety glasses meeting the ANSI Z 87.1 standard or better.

B. A buffer zone needs to be provided between the edges of the battlefield and spectators at all times. This needs to be increased when combat archery is included. The marshal-in-charge must ensure that it is a safe distance (it should not be possible to hit a spectator, either with direct fire or with a bounced arrow), taking into account the type of scenario, to minimize the chances of deflected shots traveling into the spectators. Physical barriers may eliminate the need for a buffer zone or lessen the distance needed.

A. When an injury occurs on the field, it should always be remembered that the primary concern is getting to and assisting the injured party. Secondary to this objective, but no less important, is the safety of persons entering the field to help and the well-being of anyone already on the field. (For example, fighters standing around in armor in the sun could be

subject to heat problems.)

B. All injuries that require hospitalization or similar care, include a period of unconsciousness, or may require future medical care need to be reported to your Kingdom Earl Marshal within 24 hours of the incident. Include all available details in the report.

C. In the event of an emergency, the marshals shall cooperate with any authorized persons responding to the emergency and keep the area clear of would-be spectators.

D. In the event of any suspected injury on the field, the marshal shall halt all fighting in the area and determine the proper course of action. The hold may be a local hold as long as the safety of the injured person can be maintained. The overall situation should be assessed, and, as the injured party is tended to, every effort shall be made to release as much of the field as possible so that combat may proceed.

E. If the injured person is conscious, they may be asked if they would like assistance. No conscious person will be forced to accept treatment without his or her consent. No non-combatant shall enter the combat area until summoned by a marshal.

F. A marshal shall call for assistance if they suspect that a participant is experiencing more than momentary distress. It is an extremely serious matter to delay the application of first aid when it is needed, and marshals who ignore injuries may be subject to revocation of their authorization to supervise combat-related activities.

G. No one may remove an injured fighter from the field without the consent of the event marshal-in-charge or an appointed deputy.

H. Any immediate and significant problems associated with an injury on the field shall be reported to the kingdom Earl Marshal.

The guidelines outlined in this section are not rigid requirements, but are placed here in an attempt to help clarify and to provide examples of acceptable methods and procedures.

A. Preparing to Marshal Combat Activities

As marshal-in-charge, you are responsible for organizing the marshaling. This does not mean that you have to do it all yourself.

Things that need to be done prior to all combat activities:

1. Check that the field can be safely fought upon, preferably before the site is reserved for the event. Can someone in armor, with restricted vision, cross it safely (i.e., without injury; simple tripping is an inherent hazard of combat in rough terrain)? At minimum, check at the beginning of the day to see if there are holes, soft spots, rocks, etc. If they are serious and cannot be worked around, move the fighting somewhere else.
2. Arrange for equipment inspection. (See Equipment Inspection Guidelines below.)
3. Arrange for marshals for all of the combat. That means an absolute minimum of one marshal per single combat (preferably two or three); enough marshals for group combat (melees and war battles) to both surround the fighting (to keep an eye on the boundaries) and keep most of the fights under general surveillance (for

detached armor, broken weapons, etc.). It is relatively common for a marshal-in-charge to draft anyone he or she feels is competent to serve as field marshals during an event. Whether these individuals are warranted marshals is a matter of kingdom choice. The advantage of being a warranted marshal is that you are an official of the Corporation, which gives you certain legal protection from lawsuits (if any) arising from your actions as a marshal. Since the Society and its officers have never faced a lawsuit over fighting on the field, this may not seem critical, but it is worth thinking about. If volunteers are in short supply, point out to the fighters that they do not get to start until sufficient marshals are available.

4. When it is all over, write up a report on the event (see the Paperwork section under VII. Chain of Command).

B. Marshaling Single Combat

1. At minimum, there should be one marshal for single combat. Two or three will be able to see more of the fight. Four or more will get in each other's way and block the view from the sidelines without providing noticeably better marshaling.
2. As noted earlier, marshaling has three parts of nearly equal importance: safety, fair witness, and showmanship. Excessive concern for any of these, to the neglect of the other two, will make fighting less enjoyable for all concerned. While these concerns apply to all marshaling, they are most detailed and balanced in single combat.
3. Safety
 - a. The field itself can cause safety problems. Before you begin, look over the area where the fighting will take place. Look particularly for large holes, soft spots, and rocks. (The fighters will generally accept small holes, rocks, etc. as part of the terrain.) Once the fight starts, try to keep it away from these areas. If the hazards are serious, move the fight. As the fighters come onto the field, take a quick look to see if they have their full armor, especially elbow, neck, and hand armor. These are the likeliest to be removed and then forgotten. This should not take any time at all; it is neither a full inspection nor an attempt to catch someone trying to play silly games with the rules—just a quick double-check to help someone who may have been distracted by the excitement of the day.
 - b. Once the fight has started, watch particularly for broken armor, lost tempers, injuries, and unauthorized people/pets/objects on the field. (Outsiders, especially small children and pets, do not always realize that they are supposed to stay off of the field during combat.) If there is a problem, shout "Hold!", several times if necessary. (Most fighters will hear and respond to a cry of "Hold!" even when they won't notice their own names being called.)
 - c. If the first cry of "Hold!" does not cause the fighters to stop, get in between the fighters (or between the fighters and whoever or whatever has wandered onto the field) and block the weapons with your staff until the fighting stops. Keep yelling "Hold!" while you do so that eventually they may notice. That is one reason why marshals routinely carry staffs on the field.
 - d. Bear in mind that the various kingdoms have somewhat differing traditions as to how much marshals should intrude into a fight. On one extreme, some kingdoms expect marshals to volunteer advice anytime they think the fighters might possibly have a question about a blow. If you are new to marshaling, or merely new to the kingdom you are in, try to find out where in this spectrum

your kingdom lies. It will make a difference in how you act and, perhaps more importantly, it will make a major difference in what the fighters expect of you. Blatant violations of the rules and safety concerns should always be brought up either immediately if necessary for safety issues, or as there is a “hold” called for rules discussions that can wait until then.

4. Witness

- a. You are expected to be an impartial witness to exactly what happens during a fight. Ideally, you should be able to describe the last 3 – 4 blows on your side of the fight: where they started, their angle of approach, how they were blocked or where they landed. Do not be afraid to say, “I don’t know” if you were looking at one part of the fight when something (allegedly) happened in another part.
- b. Do not try to impose your view unless you see what appears to be major and repeated problems. Leave the blow counting to the participants unless you see clear reason to intervene; usually they have a much clearer perspective than the marshals to *(determine blows)*.
- c. If the fighters do ask you what happened (or you feel compelled to volunteer), try to do so tactfully. Prefacing your statements with “It looked to me like...”, “It appeared...”, or “To the crowd it looked like...” is preferable to a dogmatic assertion of what happened. Similarly, *(it)* is preferable to ask, “Was that dent in your helm before?” rather than saying, “That blow put a 6-inch dent in the side of your helm.” The *(latter)* may be 100% accurate, but is unnecessarily antagonistic to someone who may honestly have thought the blow too light.

5. How to observe combat

- a. In order to be able to answer as accurately as possible, you need as clear a view as possible. This means being close to the fight. You need to strike a balance between getting closer to see better and staying back out of range of the blows. Just want *(what)* the appropriate distance is for you will depend on your level of experience with the fighting, (e.g., how well you can judge what the range of the weapons is and whether you are in or near it). In general, for single combat, 20 yards is too far away and 2 yards is too close. In the absence of a better idea, consider 5 yards for weapons less than 3 feet in length and 8 yards if either combatant has a longer weapon. Try to keep moving so the combatants are roughly centered between you and the other marshals for the fight.

6. Showmanship

- a. Keep an eye on the audience. SCA combat is a spectator sport, just as medieval tournaments were. Your part of the show is to keep things moving and avoid blocking the view from the sidelines except where unavoidable. This means fast pre-fight checks and announcements, a minimum of holds and discussions during the fight, and a strenuous effort to stay out of the way and keep moving. (If it’s cold, wear several layers of clothing and move even more; one person in a cloak can interfere with the view of many).

C. Marshaling Melees

1. When marshaling a melee, the witness function is necessarily relegated to a very low priority. (It is not unimportant, but it is impossible for a handful of marshals to be

accurate witnesses to the details of a couple of dozen separate combats.)

2. You should have a minimum of 3 marshals for the first 20 fighters, plus one additional marshal for each 15 fighters up to a total of 500 fighters and 35 marshals. If you have more than 500 fighters (realistically, even if you have more than 50 fighters), you should have an experienced Marshal in Charge and a sizable number of experienced marshals. It is preferable to have more marshals for free- for-all melees.
3. Marshals should station themselves around the edges of the fight. This allows them to control the borders while keeping as much of the fighting as possible in view. It also prevents fighters from running into them from behind. As always, keep moving and stay close enough to spot safety problems.
4. In very large melees, it may be desirable to have some marshals in the middle of the field, in addition to those around the edge. If you are mid-field, be careful that you do not get so interested in the fight in front of you that you back into or forget to watch another bout moving around behind you.

A. This example of an authorization is for an armored combat fighter. This procedure may be used as-is by a kingdom, or it may be modified as required to reflect differences in culture and convention. This authorization procedure requires that a member of the Chivalry (to act as a witness and provide a second opinion), a warranted authorized marshal, and an experienced authorized fighter be present. *In Drachenwald, if a member of the Chivalry is not available then the procedure may continue without one if an Authorizing Marshal is present.* This outline is general and does not deal with the specifics of armor and weapons rules, since these rules may vary. Warranted authorized marshals will be trained in the specifics as they change.

1. If the fighter does not have proof of a signed waiver (for example, a blue membership card) prior to the authorization, the candidate and the authorizing marshal will properly complete a waiver (SCA, Inc. form titled Consent to Participate and Release Liability) *where applicable, in Drachenwald.*
2. The persons conducting the authorization must verify that the candidate is familiar with the Rules of the List and the current rules that specifically govern the Kingdom of residence.
3. The candidate must present themselves on the field in armor for inspection. The armor must be inspected on the body and must pass the current armor requirements for combat. This inspection shall be complete and exacting, and any deficiencies must be permanently corrected before the person may authorize.
4. Both the experienced authorized fighter and the candidate shall be armed with sword and shield or the weapon in which the candidate seeks authorization, if the kingdom requires separate weapon authorization. (The Earl Marshal may permit a substitute weapons system.)
5. For the first few minutes of the bout for authorization, the prospective fighter and the authorized fighter shall fight at 1/2 to 3/4 speed and verbally acknowledge all blows landed. During this phase of the authorization, the marshal and, if available in Drachenwald, the member of the Chivalry should get an impression of the new fighter's style, technique, ability to call blows, and ability to defend themselves. If this portion of the authorization is not satisfactorily completed, the authorization

procedure shall be stopped. The candidate shall be told of the problems observed and instructed as to how to correct the problems.

6. If the first portion of the bout has progressed satisfactorily, then the combatants will be told to fight in list-type combat, counting blows until one is defeated. During this phase, the marshal and, if available in Drachenwald, member of the Chivalry should observe the new fighter's control, reaction to blows, and ability to cope with pressure.
7. The marshal, the member of the Chivalry if available in Drachenwald, and the authorized fighter shall confer to decide if the new fighter exhibits adequate performance in the minimum criteria for authorization listed below:
 - a. Does the candidate know and apply the Rules of the Lists and the Conventions of Combat?
8. Does the candidate exhibit safe behavior on the field, for both self and others?
9. How does the candidate react to pressure? Does he or she fight back or become disoriented and confused?
10. Can the candidate defend him or herself?
11. Is the authorizing fighter able to feel and judge blows, both those received and those thrown?
12. If the marshal, member of the Chivalry *if available in Drachenwald*, and authorized fighter agree that the candidate meets these requirements, the marshal will notify the fighter that they are now authorized. The fighter and marshal will properly complete any paperwork required by the kingdom in addition to the previously completed Waiver for SCA Combat-Related Activities.
13. The fighter will send these properly completed forms to the kingdom official responsible for issuing authorization cards. Upon receipt of these properly completed forms, an authorization card will be issued. The fighter shall be issued a temporary card or keep a copy of the authorization form and waiver if he or she intends to fight prior to receiving the authorization card. The card should be received within one month. If the card is not received, the fighter should contact the authorization official and forward any information or paperwork required. *In Drachenwald, this process sometimes takes additional time due to logistical considerations.*

A. General Information

1. At each event, the marshal-in-charge must arrange for the inspection of all equipment to be used in combat (e.g., armor and weapons). This in no way relieves the individual combatants of their responsibility for following the equipment standards. Ultimately, the fighter is responsible for the condition and safety of their armor and weapons at all times. This includes periods between bouts, between battles, and day to day periods between battles at a multi-day event. However, the marshal's inspection is intended to provide a second pair of experienced eyes and an outside point of view. A reminder: Equipment that was perfectly serviceable at the beginning of the previous event could have broken since, and even the most experienced fighter can occasionally forget some piece of armor. The inspection

outlined below is merely an example. For purposes of illustration, the inspection described is for regular SCA combat without missile weapons. It does not necessarily include checks for additional requirements that your kingdom may have added. A checklist might be helpful as you do the inspection until you have done so many that it becomes second nature. (As noted in the section on marshaling combat, a quick visual check of the combatants just before the start of a bout or battle is also a good idea.) All of this is based on the equipment standards given in the Appendix. You should be familiar with them, as well as with any other requirements that your kingdom may have instituted. The fact that one of the requirements is not mentioned on this checklist does not mean that you should not notice if it has not been met.

2. Armor inspection must be done with all of the armor on the body of the fighter who is going to wear it. It is not otherwise possible to get an accurate idea of what is covered and what is not, of where gaps may occur as the combatant moves. In weapon inspections, the primary test is safety. If you, as a marshal, do not believe that the weapon is safe (i.e., if you would not be willing to face it), do not let it be used on the field. When in doubt, ask the prospective user if he or she would be willing to fight against the weapon. If not, it should not be used regardless of whether it meets all other requirements. Before you start, remind yourself that armor is hot, not to mention heavy. If the weather is hot, try to find some shade in which to hold the inspection or, at least, for the fighters to stand in while waiting to be inspected. (Similar reasoning applies in case of rain, freezing cold, or other inclement weather. Just because it is possible to fight does not mean that it is pleasant or desirable to stand around in armor.)
3. As a marshal, you are not guaranteeing or certifying that anything is completely safe, and its use is without risk. The primary responsibility for the safety of weapons and armor remains with the fighter. You are inspecting to see whether the item (helmet, armor, weapon, how the armor sits on the fighter, etc.) complies with our published standards or not. If it does, it may be used in our combat activities — otherwise it may not. The purpose of our rules, standards and inspections is to reduce the chance of injury for those who participate. Even with those rules and standards, all of our combat activities can lead to injury. Properly carrying out your duties as an officer of the SCA and a marshal will indemnify you in case the corporation or its officers (of which you are one) are sued.

B. Sample Armor Inspection

See Section VI, “Armor Requirements” above for Society minimum standards.

1. Leg Armor: Check that the front and sides of the knee are covered. If you are concerned about coverage during combat, have the fighter flex their knees (either a deep knee bend or raise one knee at a time) and see that the knee remains covered. Check for signs that the equipment is faulty.
2. Groin: ASK the fighter if they have remembered their cup or groin protection. Do not attempt to check for it physically.
3. Kidneys: Check for kidney armor. Kidneys are located in the back, at the bottom of the ribs.
4. Elbows: Check that the point and sides of each elbow are covered. If you are concerned about coverage during combat, have the fighter flex their arm to validate that the elbow remains covered. Check for signs that the equipment is faulty.

5. Hands and wrists: Check the gauntlet and/or basket hilt to see if they cover the required area (the hand and one inch of the forearm). Check for signs that the equipment is faulty.
6. Neck and Head:
 - a. Checks b. through e. below are to be conducted with the helmet on the fighter's head.
 - b. Have the fighter assume their normal fighting stance. Check that the larynx and cervical vertebrae are covered. If it appears likely that the fighter's coverage for these areas will not remain in place when the fighter moves, you may have the fighter turn or tilt their head to typical combat positions to see that the required protections are in place.
 - c. Check the faceplate and eye slots for greater than one-inch openings that would allow weapon penetration.
 - d. Put your hand on the front of the helm and have the fighter push against it. See that their face does not hit the faceplate. (A gentle touch of the tip of the nose to the faceplate at maximum pressure is undesirable.)

R P D

other signs that they are coming apart.

- d. Check the wrist strap or other means of keeping the sword from flying away.
2. Thrusting Tips: Check that they have the minimum cross section. Push on the end to verify the required amount of resilient give. Check that the tip is constructed in such a manner that it cannot be forced more than .5 inch (12.7 mm) into a legal faceguard.
3. Mass Weapons: Check the padding for give. Check the wrist strap (singlehanded mass weapons only, *if required*). Consider the total mass of the weapon.
4. Pole Weapons: Check the thrusting tip, if any. Check the padding for give. Consider the total mass of the weapon. Check that the weapon meets the relevant length restrictions.

D. Sample Combat Archery Inspection

1. Bow/Crossbow
 - a. Ensure that the string is not showing excessive wear.
 - b. Measure the power of the bow with a calibrated scale to ensure it is within appropriate specs.
 - c. Check the bow itself for cracks or gouges, as well as for significant limb twist that could make the string leave the tips.
2. Crossbow Only
 - a. Heck the lock mechanism releases smoothly under simulated pressure.
 - b. Check that the lock mechanism is solid and will not accidentally fire.
 - c. Ensure the stock has no failures between the bow and lock.
3. Ammunition
 - a. Based upon the type of ammunition, measure all dimensions for conformance.
 - b. With two fingers and a thumb, grab both head and tail and pull with moderate force while slightly twisting. If either end moves laterally, it fails.
 - c. If the ammunition is made with foam, check that the tip is constructed in such a manner that it cannot be forced more than .5 inch (12.7 mm) into a legal faceguard.
 - d. If the blunt is commercially manufactured, ensure it is in good repair.
 - e. Check the shaft and APD (if applicable) for signs of cracking or other failure. If a marshal can place a fingernail in a defect, then it fails.
 - f. Check that it is properly labeled and taped.

A. Experimental Weapons and Materials

1. Before any unapproved weapon or material can be used at Society activities, a test plan and a sample of the proposed weapon or material must be submitted to and approved by the Society Marshal or a designated deputy. This plan shall include:
 - a. Specifics on construction (e.g., materials used, how it is assembled, etc.)
 - b. A detailed outline of the test and its scope.
 - c. All restrictions that will be imposed on the test.
 - d. How long the test period would be.

If requested, any samples submitted shall be returned to the submitting party no later than the conclusion of the test period, unless otherwise specified.

2. It is the prerogative of the kingdom Earl Marshal to allow limited testing of alternate or unapproved materials and weapons within a kingdom after receiving approval from the Society Marshal. Limited testing means the weapon or material may be used at fighter practice tourneys and in small melees, but only after all combatants and marshals have been informed the weapon or material is being tested and that it is not approved for general SCA use.
3. All combatants and marshals must consent to the use of the weapon or material before combat begins. If any of the marshals or combatants object to the use of the material or weapon, the material or weapon may not be used in that fight or battle. All experimental materials and weapons shall be marked with alternating bands of red and green tape totaling 6 inches (15.2 cm) in length. Bands shall be visible during weapon usage.
4. Once per quarter throughout the test period, the Earl Marshal will update the Society Marshal on the progress and results of the testing. At the end of the test period, the Earl Marshal will provide the Society Marshal with a test summary. This summary shall include a list of injuries that resulted from the use of the weapon or material and any concerns from fighters and marshals recorded during the testing. The Society Marshal, after consultation with the Earls Marshal, shall determine if the weapon or material is suitable for SCA combat-related activities.

A. Reporting Requirements

1. If you are a Marshal-at-Large:
 - a. Whatever processes your Kingdom requires of a warranted marshal.
 - b. Reporting on any incident observed, either during or related to combat, on which the Marshal in Charge was required to report.
2. If you are the Marshal in Charge of an event:
 - a. Whatever processes your Kingdom requires of a warranted marshal.
 - b. A brief report on the event, including any incidents in which:

- i. *In Drachenwald, if someone was sanctioned as described in XVIII.*
 - ii. *In Drachenwald, this section is added to compensate for a numbering error in the SCA Marshal's Handbook.*
 - iii. *In Drachenwald, this section is added to compensate for a numbering error in the SCA Marshal's Handbook.*
 - iv. Someone was injured.
- 3. A fighter or marshal had to be disciplined.
- 4. Event reports shall go to the Principality Knight Marshal or the Kingdom Earl Marshal. (Reports should not go to the Marshal of the Society!)
- 5. Any other reports that the Earl Marshal of your Kingdom requires. (If you do not know, write and ask what he or she will want before the event. It is a lot easier that way.)
- 6. If you are the Knight Marshal of a branch:
 - a. Whatever processes your kingdom requires of a warranted marshal.
 - b. Regular reports on the state of fighting in your branch. If there are subsidiary branches (e.g., cantons or ridings), this includes summarizing the reports that you get from them. Ask your immediate superior how often you need to do this.
 - c. Any other reports that the Earl Marshal of your kingdom requires.
- 7. If you are the Principality or Deputy Kingdom Earl Marshal or Knights Marshal:
 - a. Whatever processes your kingdom requires of a warranted marshal.
 - b. Regular reports on the state of fighting in your principality or region.
 - c. Any other reports that the Earl Marshal of your kingdom requires.
- 8. If you are the Earl Marshal of a kingdom:
 - a. An agreement to serve as Earl Marshal.
 - b. Quarterly reporting to the Society Marshal regarding the state of fighting in your kingdom. (If you are required to make a similar report to the Crown, a copy to the Society Marshal is sufficient.)
 - c. If disciplinary action that extends beyond the bounds of a single event is being taken against a fighter in your kingdom (e.g., authorizations suspended or revoked, Courts of Chivalry), a brief account of what was done, to whom, and why. (If more information is needed, for example because of an appeal of the action, the Society Marshal will let you know.)
 - d. Either individual warrants must be provided for each member of the marshallate in your kingdom, or a roster must be maintained. (Information on the roster system may be obtained from your kingdom seneschal.) This task may be partially delegated to the regional or principality marshal of your kingdom, if any.
 - e. Answer correspondence from the Knights Marshals of your kingdom.

9. If you are Marshal of the Society:

- a. On a quarterly basis, report to the President (and thence to the Board) on the state of the marshallate.
- b. Provide warrants for the Earls Marshal as they are appointed.
- c. Answer correspondence from the Earls Marshal.

A. Grievances and Disputes

Usually, the combatants are more than willing to correct any problems or breaches of the rules pointed out by a marshal. This is the desired solution: get the problem fixed. However, occasionally a marshal must take action. In the unhappy event that you find it necessary, here is how you shall proceed. In order of preference:

1. Point out the violation (missing armor, grappling during combat, etc.) and ask the fighter to correct it.
2. In the case of missing or inadequate armor, do not allow the combatant onto the field until it has been fixed.
3. In the case of violation of the rules during combat, ask the combatant to leave the field, and do not allow combat to resume until he or she has cooled off. This particularly includes removing from the field anyone who has lost his or her temper.
4. If you need support, call on (in order):
 - a. Any other marshals who are present (especially the marothe.

2. Sanctions which revoke or limit the ability of a fighter to participate for no longer than a single event (even if the event is a multi-day event or war) are not considered to be “administrative sanctions” as discussed in the Society Sanction Guide, and do not follow procedures for administrative sanctions.
3. Possible sanctions include:
 - a. Revoking the authorization of the individual to fight with a particular weapon. (This sanction may be applied whether or not your kingdom does authorizations by weapon forms.)
4. Revoking the authorization of the individual to fight at all.
5. Recommendation to the Crown to banish the individual from participation in events.
6. Recommendation to the Board to banish the individual from the Society and its activities.
7. If any of these long-term sanctions are in progress, the Society Marshal shall be informed.
8. If authorization has been revoked, it is acceptable to inform the Earls Marshal of any neighboring kingdoms to which the currently unauthorized fighter might travel. Once long-term sanctions have been applied, a report shall be made to the Marshal of the Society.
9. An authorization from any Kingdom may be suspended/revoked in another Kingdom, should it prove necessary and appropriate. Such suspension/revocation means that the fighter may not fight anywhere in the Society until and unless the issue is resolved. Accordingly, the Earl Marshal of the kingdom issuing the suspension shall inform the Society Marshal and the Earls Marshal of the neighboring kingdoms.
10. Furthermore, if the fighter is subsequently re-authorized, the neighboring Earls Marshal shall again be notified.

XIX. Glossary

The definitions that follow apply throughout the Handbook, unless specifically stated otherwise. They are intended to clarify usage and establish a frame of reference for the various materials used in SCA combat.

A. Armor Materials

: flexible curtain of chainmail on a helmet, extending to cover the neck and shoulders.

: Used in the visor or faceplate of helms, bars shall be mild steel a minimum of 3/16 inch (4.5mm) in diameter, or the equivalent. If the distance between crossbars is 2 inches (50.8 mm) or less, .125 (that is, 1/8) inch (3.2 mm) bars may be used.

: flexible curtain of mail or leather on a helm, extending to cover the neck (also *aventail*).

: stiff foam with closed cells, less dense than resilient foam (e.g., Ensolite).

: virtually identical to the specified material in effect or function, including impact resistance, impact distribution, and impact absorption characteristics, but not necessarily in physical dimensions.

: any open- or closed-cell foam, including foam rubber, foam neoprene, polyurethane, etc.

: U.S. sheet metal standard. Note that 16-gauge is officially 1/16 inch (.0625 inch or about 1.6mm), but commercially available sheet is frequently rolled to .058 or even .055 inch—much too thin for helms.

: An armored glove covering the back of the hand, fingers, and thumb and the points and back of the wrist.

: a piece of armor designed to cover the throat and neck.

: stiff, oak-tanned leather nominally 11/64 inch (.171875 inch or 4.4 mm) thick. This is referred to as 11 ounce leather.

: any fabric of small metal components either linked together (e.g., chain) or attached to a flexible backing (e.g., ring or scale).

: quilted or multi-layered cloth material, such as mattress pads, moving pads, carpet, felt, or equivalent

: An armored glove covering the back of the hand and at least the first knuckle of the thumb, as well as the points and back of the wrist.

: large components of rigid material.

: dense, plastic, closed-cell foam such as ethyl polymer.

1. Steel of no less than 18 gauge, or aluminum of no less than 0.075 inch (1.9mm)
2. Other metals of sufficient thickness to give similar rigidity to those listed above to

include treated steel or aluminum

3. High-impact-resistant plastics such as ABS or polyethylene of sufficient thickness to give similar rigi]

to which it is attached.

: cross-guards of a sword.

: A brand-name polyethylene tubing has been made from PE 3408 and PE 3608, but is now PE 4710 resin and conforming to ASTM D2239 standards. The material is approved for various uses throughout the rules in pressure ratings ranging from 75 PSI to 200 PSI. Please check the standards in the appropriate area of the rules for what is allowed.

: HDPE Water Service Pipe materials meeting ASTM D2239 (and minimum of 1 inch (25.4mm) inner diameter) or ASTM D2737 (and minimum of 1.25 inch (31.8mm) outer diameter) and manufactured of PE3408, PE3608, PE3710 or PE4710 resin, or equivalent.

hafted weapons designed for thrusting only; also called pikes.

: maces, axes, war hammers, or other weapons designed primarily to crush or punch holes (on account of the weight of the real weapons), rather than primarily to cut (on account of sharp edges on the real weapon). Maximum length for single-handed mass weapons is 48 inches (122cm).

: a tube or similar device that wraps around the shaft of a spear and is held in one hand, allowing the spear to slide through it. Use of sliders is prohibited.

: Rattan of at least 1.25 inch (31.75 mm) diameter which has been split in two and applied to a weapon such that the striking surface of the split piece retains a cross section of 1.25 inch (25.4 mm). Split rattan construction does not place the split rattan directly against the non-split haft of the weapon, but rather spaces the split off of the haft to allow give in the head by flexion of the split of rattan.

: single- or double-edged, bladed cutting weapons (including swords with thrusting tips).

: includes two-handed swords, greatswords, bastard swords, polearms, and similar weapons.

: Ultra-High Molecular Weight Polyethylene – A wear resistant plastic with outstanding impact strength.

C. Other Definitions

: A full contact, non-choreographed re-creation of medieval foot combat utilizing clothing, protective armor, and simulated weapons constructed in accordance with SCA standards, with the overall goal of recreating the appearance and methods of combat from the historical period covered by the SCA. For purposes of this definition, all combatants are held to be equipped in the same manner, defined as that of approximately 1100 AD: a knee-length mail hauberk, one-piece helm with nasal, and boiled leather defenses for the lower arms and legs. Weapons and armor are constructed from approved materials as defined by the Society Marshal. Adult armored combat as defined above does not include light contact martial forms, such

as rapier and youth combat. Adult armored combat includes all combat archery and siege weaponry used in melees or for war.

: a combatant equipped in inspected and approved armor, who meets at least the minimum requirements for combat using rattan weapons, and who uses said rattan weapons in combat.

: a procedure which determines that the individual fighter has, at minimum, read and become familiar with the rules of combat, been observed while fighting, and met any further requirements for authorization to ensure that he or she does not constitute an exceptional safety hazard (either to self or to others). Details of the procedure used vary from kingdom to kingdom and may include further requirements. (Note: The former term “qualification” is still heard, but should be avoided.)

: a single combat event in a war or war game wherein a specific scenario is enacted.

: a combatant equipped in inspected and approved armor, who meets at least the minimum requirements for combat using rattan weapons and who will be using archery equipment in combat. Rules for combat archery weapons and conventions are found in this handbook.

: a thrust that contacts the face-guard of the helm and, while maintaining contact with the face-guard, continues to travel in the direction of the face.

: the warranted chief marshal of a kingdom.

: a blow delivered with effective technique for the particular type of weapon used and struck properly oriented and with sufficient force.

: the defined area for fighting, or the fighting field, usually with a roped-off boundary.

: For the purposes of acknowledging blows, a fully armored fighter is presumed to be wearing a lightweight, short-sleeved, knee-length, riveted-mail hauberk over a padded gambeson, with boiled leather arm and leg defenses and an open-faced iron helm with a nasal. (The helm may be presumed to include a very light chain mail drape permitting vision and resisting cuts by a mere touch of a bladed weapon.) Also, the hands, wrists, knees and lower legs, and feet, including the areas up to 1 inch (25.4 mm) above the kneecap and 1 inch (25.4 mm) above the bend of the wrist, are not legal targets.

: an opponent who is unable to defend him- or herself from attack for reasons beyond their control. An unarmed opponent is not necessarily helpless.

: The warranted chief marshal of a Principality, Barony, Province, Shire, Canton, etc.

: projectile weapons including, but not limited to, bows and arrows, crossbows and bolts, slings and stones or bullets, javelins, darts, and throwing axes.

: someone who is monitoring the conduct of combat on the field. (The marshal in charge of an event shall be a warranted marshal; other individual marshals may or may not be, so long as the marshal in charge finds them competent to do the job.)

: rattan or equivalent weapons including, but not limited to, swords of all lengths, great weapons, mass weapons, (*polearms*) and spears.

An appointed marshal who is listed on a roster. The roster must include the legal and Society names, address, phone number, and the appointment and expiration dates for

each officer. It must be signed by the appropriate royalty and the responsible superior officer, and be updated regularly. The roster must contain a statement that it is the current roster of (office) for the (kingdom, principality) of the Society as of (date). Local Knights Marshal and marshals who are able to perform authorizations must be either warranted or rostered.

: The body of rules and definitions which apply to a specific battle, such as the description of real or imaginary terrain features, obstacles, weapons limitations, allowable conduct, and scoring.

: a fully armored participant in armored combat who operates a siege engine.

: the warranted chief

marshal of the Society for Creative Anachronism.

: a declared state of feigned hostility between two or more kingdoms, branches, or other recognized SCA subdivisions, for the express intent of holding group combat.

: group combat events not involving a state of declared hostility, usually with both sides drawn from all of the kingdoms, branches, or other recognized SCA groups participating.

: An appointed marshal who has been appointed by a Warrant of Appointment to Office of the SCA Inc., signed by the appropriate Royalty and the responsible superior officer. Local Knight Marshals, as and marshals who are able to perform authorizations must be either warranted or rostered.

is a program designed for minors ages 6-17. These programs require armor, require certain weapon construction techniques and materials, train young fighters in proper etiquette, the concepts of Chivalry, Honor and Courtesy, teach teamwork and good sportsmanship, as well as effective fighting arts, in a definitely competitive environment that parallels Adult Armored Combat. It employs Marshals, authorizations and strict controls. The Marshallate is responsible for Youth Combat, and each Kingdom is allowed to develop and run its own program